

OLYMPUS®

CAMEDIA

DIGITAL CAMERA C-2 D-230

QUICK START GUIDE

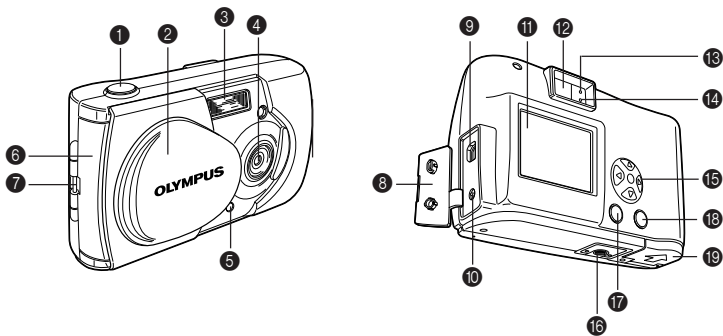
Thank you for purchasing an Olympus digital camera. Please read the operation manual supplied with the camera carefully before using your camera. We recommend that you become familiar with your camera by taking a number of test shots before performing important shooting.

PACKAGE CONTENTS

Check that your digital camera comes complete with the items listed below in the specified quantities.

- Digital camera 1
- Strap 1
- AA Alkaline batteries 2
- SmartMedia card (16MB) 1
- USB cable 1
- CD-ROM (CAMEDIA Master and reference manual) 1
- Quick Start Guide 1
- Basic Manual 1
- Warranty Card 1

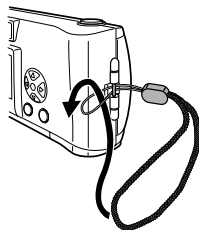
NAMES OF PARTS



- 1 Shutter button
- 2 Lens barrier
- 3 Flash
- 4 Lens
- 5 Self-timer lamp
- 6 Card cover
- 7 Strap eyelet
- 8 Connector cover
- 9 USB connector
- 10 DC-IN jack
- 11 Monitor
- 12 Viewfinder
- 13 Orange lamp
- 14 Green lamp
- 15 Arrow pad
- 16 Tripod socket
- 17 Monitor button
- 18 OK/Menu button
- 19 Battery compartment cover

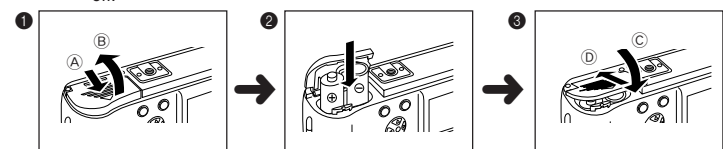
ATTACHING THE STRAP

- Pass the short end of the strap through the strap eyelet.
- Pass the long end of the strap through the loop.
- Pull tight and check that it is securely attached.



LOADING THE BATTERIES

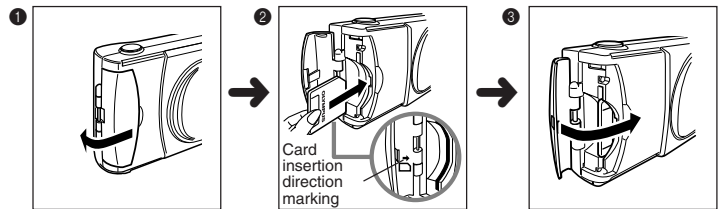
Caution Check that the lens barrier is closed and both the monitor and the orange lamp are off.



- Slide the battery compartment cover toward (A) and lift it up in the direction of (B).
- Insert the batteries as shown, making sure that they are correctly oriented.
- Push down the battery compartment cover in the direction of the arrow (C) and close firmly in the direction of (D) until it clicks.

INSERTING THE SMARTMEDIA CARD

Caution Check that the lens barrier is closed and both the monitor and the orange lamp are off.



- Open the card cover.
- Insert the card in the direction shown in the figure. There is a mark inside the card cover, indicating the direction in which the card should be inserted.
- Close the card cover securely until it clicks.

SETTING THE DATE AND TIME

- Press the (M) button to turn the monitor on.
- Press the (M) button to display the menu.
- Select [SETUP] using the (V) / (A) buttons and press the (P) button.
- Select [] using the (V) / (A) buttons and press the (P) button.
- Select the date format "Y-M-D (Year-Month-Day)", "M-D-Y (Month-Day-Year)" or "D-M-Y (Day-Month-Year)" using the (V) / (A) buttons and press the (P) button.
- Set the first figure using the (V) / (A) buttons, and then proceed to the next figure using the (P) button.
- Repeat the above procedure until the date and time settings are adjusted.
- Press the (M) button when the clock reaches 00 seconds.
- Press the (M) button to turn the monitor off.

TAKING PICTURES

To turn the camera on : Open the lens barrier. (You are now ready to take pictures.)
To turn the camera off : Close the lens barrier.

Caution Never attempt to open the card cover or remove the card or batteries while the orange lamp is blinking. Otherwise, the image data on the card may be destroyed. Remember that it is impossible to restore image data once it has been destroyed.

Note Press the shutter button halfway (A) and then press it fully (B).



FLASH (ON OFF) (ON OFF)

- Open the lens barrier.
- Check the current flash mode by pressing the (P) button.
- To change the setting, press the (P) button until the appropriate flash mode is displayed. Setting of the flash mode is completed.

Note Flash mode settings

- Auto (AUTO) Automatically fires in low light or backlight conditions.
- Red-eye (RE) Reduces the phenomenon of the subject's eyes appearing red in the image.
- Fill In (FI) Fires regardless of the light conditions.
- Flash Off (OFF) Does not fire even in dark conditions.
- Night Scene (NS) For taking pictures at night.
- Night Scene/Red-eye (NS/RE) For taking pictures of people against a night background.

MACRO (M)

This mode is for taking close-up pictures at distance of 10cm-50cm (4in-1.6ft).

- Open the lens barrier and press the (P) button to display the current setting [OFF].
- Press the (P) button again to set the Macro (M) mode.
- Take a picture by looking at the monitor.

DIGITAL TELE

This mode enables you to take pictures in six magnifications: 1.6x, 2x, 2.5x, 3.2x, 4x and 5x.

- Open the lens barrier and press the (V) button to turn the monitor on.
- The image is magnified in the sequence [1.6x → 2.0x → 2.5x → 3.2x → 4.0x → 5.0x] each time the (V) button is pressed. The image is zoomed out in the sequence [4.0x → 3.2x → 2.5x → 2.0x → 1.6x → OFF] each time the (V) button is pressed.
- Take a picture by looking at the monitor.

Note The image quality needs to be set to SQ2 to magnify 3.2x, 4x or 5x.

SELF-TIMER (S)

- Press the (M) button with the lens barrier open to display the Camera menu.
- Select [CAMERA] using the (V) / (A) buttons and press the (P) button.
- Select [DRIVE] using the (V) / (A) buttons and press the (P) button.
- Select [] SELF-TIMER using the (V) / (A) buttons and press the (M) button.
- Press the (M) button again to exit the menu.
- Press the shutter button.

The self-timer lamp on the front of the camera lights up for 10 seconds and then blinks for 2 seconds, before the picture is taken.

■ SEQUENCE MODE (📷)

- 1 Press the button with the lens barrier open to display the Camera menu.
- 2 Select [CAMERA] using the / buttons and press the button.
- 3 Select [DRIVE] using the / buttons and press the button.
- 4 Select [📷 SEQUENCE] using the / buttons and press the button.
- 5 Press the button again to exit the menu.
- 6 Take pictures. (Picture-taking continues while the shutter button is pressed and stops when the button is released.)

■ EXPOSURE COMPENSATION

This mode enables you to change the brightness of the image. (Compensation of ± 2 in 0.5 steps)

- 1 Press the button with the lens barrier open to display the Camera menu.
- 2 Select [CAMERA] using the / buttons and press the button.
- 3 Select [📷] using the / buttons and press the button.
- 4 Adjust the compensation using the button (to darken image) and the button (to brighten image), and press the button.
- 5 Press the button again to exit the menu.
- 6 Take a picture.

■ METERING MODE (📷)

- 1 Press the button with the lens barrier open to display the Camera menu.
- 2 Select [CAMERA] using the / buttons and press the button.
- 3 Select [📷] using the / buttons and press the button.
- 4 Select the Metering mode setting using the / buttons and press the button.
- 5 Press the button again to exit the menu.
- 6 Take a picture.

Note Metering mode settings

ESP (📷)

The camera measures the light at the center of the viewfinder and around the periphery of the picture separately and then selects the optimal exposure.

SPOT (📷)

The camera measures the light levels only at the center of the viewfinder, allowing you to obtain the correct exposure for backlight subjects since the exposure is not affected by the background light.

■ WHITE BALANCE (📷)

- 1 Press the button with the lens barrier open to display the Camera menu.
- 2 Select [PICTURE] using the / buttons and press the button.
- 3 Select [WB] using the / buttons and press the button.
- 4 Select the white balance setting using the / buttons and press the button.
- 5 Press the button again to exit the menu.
- 6 Take a picture.

Note White balance settings

Auto (AUTO)

The white balance is controlled automatically.

Clear sky (📷)

In outdoors under a clear sky.

Cloudy sky (📷)

In outdoors under a cloudy sky.

Incandescent Lamp (📷)

Under incandescent lighting.

Fluorescent Lamp (📷)

Under fluorescent lighting.

■ IMAGE QUALITY (SHQ, HQ, SQ1, SQ2)

- 1 Press the button with the lens barrier open to display the Camera menu.
- 2 Select [PICTURE] using the / buttons and press the button.
- 3 Select [📷] using the / buttons and press the button.
- 4 Select the image quality setting using the / buttons and press the button.
- 5 Press the button again to exit the menu.
- 6 Take a picture.

Note Image quality settings (pixel size)

SHQ (1600 × 1208)

For best print quality.

HQ (1600 × 1200)

For good print quality with small print size.

SQ1 (1024 × 768)

For e-mail attachments or small print size.

SQ2 (640 × 480)

For e-mail or web use.

■ PLAYING BACK IMAGES

To turn the monitor on : Press the button with the lens barrier closed to turn the monitor on.
To turn the monitor off : Press the button again to turn the monitor off.

Note

- button : Displays the previous image.
- button : Displays the next image.
- button : Displays several images. Press the button to return to display an image.
If you press the button in the index playback, the green frame moves to the previous image, and if you press the button, it moves to the next image.
- button : Magnifies the image (1.5x → 2x → 2.5x → 3x). Press the button to return to 1x.
If you press the button while magnifying the image, scroll mode is enabled.
Press the / / / buttons to move the image up, down, left or right.
Press the button again to exit scroll mode.

■ ERASING AN IMAGE

- 1 Display the image you want to erase.
- 2 Press the button for more than 1 second to display the Erase menu.
- 3 Select [🗑️ ERASE] using the / buttons and press the button.
The selected image is erased.

■ ERASING ALL IMAGES

- 1 Press the button with the lens barrier closed.
- 2 Press the button to display the Play menu screen.
- 3 Select [SETUP] using the / buttons and press the button.
- 4 Select [🗑️] using the / buttons and press the button.
- 5 Select [🗑️ ALL ERASE] using the / buttons and press the button.
- 6 Select [🗑️ ALL ERASE] using the / buttons and press the button.
All the images are erased.



Once erased, images cannot be restored. Check the image before erasing to avoid accidentally erasing image you want to keep.

■ PROTECT (🔒)

- 1 Display the image you want to protect.
- 2 Press the button for more than 1 second. The symbol is displayed.



Protected images cannot be erased by "Erasing an image" or "Erasing all images", but they are erased by formatting the card.



To cancel the protect setting, display the image with the symbol and press the button for more than 1 second.

■ RECORDING/PLAYING BACK MOVIES (📷)

Recording movies

- 1 Press the button with the lens barrier open to display the Camera menu.
- 2 Select [CAMERA] using the / buttons and press the button.
- 3 Select [DRIVE] using the / buttons and press the button.
- 4 Select [📷 MOVIE] using the / buttons and press the button.
- 5 Press the button again to exit the menu. The monitor will turn on.
- 6 Record movies by looking at the monitor. (Press the shutter button to start recording movies. Recording stops when the shutter button is pressed again.)



The movie mode is cancelled when the monitor is turned off by pressing the button.

Playing back movies

- 1 Press the button with the lens barrier closed.
Display the movie with the symbol indicated.
- 2 Press the button to display the Play menu.
- 3 Select [PLAY] using the / buttons and press the button.
- 4 Select [📷] using the / buttons and press the button.
- 5 Select [START] using the / button and press the button.
The movie is played back.

■ MUTING THE BEEP TONES

- 1 Press the button with the lens barrier open to display the Camera menu.
- 2 Select [SETUP] using the / buttons and press the button.
- 3 Select [🔔] using the / buttons and press the button.
- 4 Select [OFF] using the / buttons and press the button.
- 5 Press the button again to exit the menu.

OLYMPUS AMERICA INC.

Two Corporate Center Drive, Melville, NY 11747-3157, U.S.A. Tel. 631-844-5000

Technical Support (USA):

24/7 online automated help: <http://support.olympusamerica.com>

Phone customer support: Tel. 1-888-553-4448 (Toll-free)

Our Phone customer support is available from 8 am to 10 pm (Monday to Friday) ET

E-Mail: distec@olympus.com

Olympus software updates can be obtained at: <http://olympus.com/digital/>

OLYMPUS OPTICAL CO.(EUROPA) GMBH.

(Premises/Goods delivery) Wendenstraße 14-18, 20097 Hamburg, Germany. Tel. 040-237730

(Letters) Postfach 10 49 08, 20034 Hamburg, Germany.

(Hotline Numbers for customers in Europe)

Tel. 01805-67 10 83

for Germany

Tel. 00800-67 10 83 00

for Austria, Belgium, Denmark, France, Netherlands, Norway,

Sweden, Switzerland, United Kingdom

Tel. +49 180 5-67 10 83

for Finland, Italy, Luxemburg, Portugal, Spain, Czech

Republic

Tel. +49 40-237 73 899

for Greece, Croatia, Hungaria and the Rest of Europe

Our Hotline is available from 9 am to 6 pm (Monday to Friday)

(E-Mail) di.support@olympus-europa.com

© 2001 OLYMPUS OPTICAL CO., LTD.

Printed in Japan

1AG6P1P1146--

VT296801