

|

8

SLIDE SHOWS

SLIDE SHOW OPTIONS

A slide show is a group of images that can be played back in sequence, using transitions. The Minolta Dimâge V control software lets you:

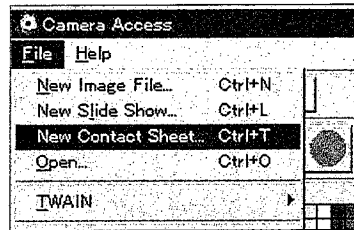
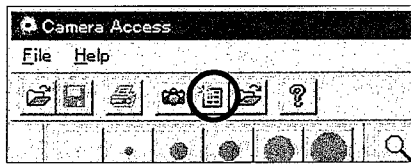
- Create a slide show from images stored on your hard disk or removable media (pp 76-80).
- Add transitions and delays to the slide show (pp 81-83).
- Use the Edit menu to change your slide show (p 83).
- Open slide shows (p 85).
- Play slide shows (p 85).
- Save your slide show (p 84).

SLIDE SHOWS

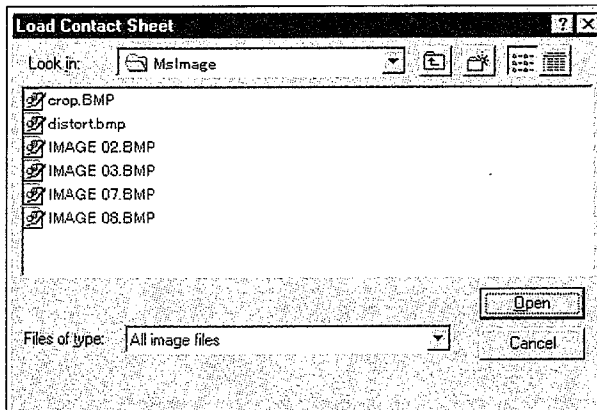
CREATING A SLIDE SHOW

Create an on-screen slide show using images stored on your hard drive or removable media.

1. Click on the New Contact Sheet button in the toolbox or select **New Contact Sheet...** from the **File** menu.



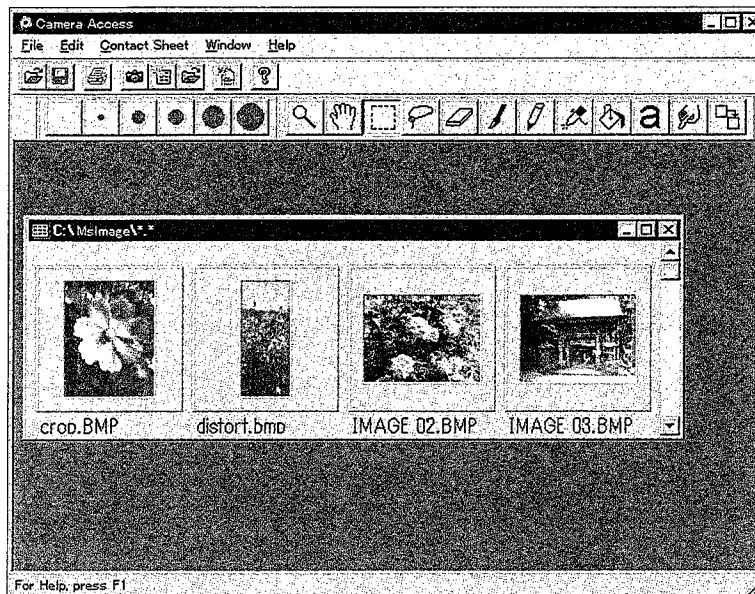
- The Load Contact Sheet dialog box will appear.



2. Select the folder/directory where the images are stored.

3. Click on **Open** (for Windows 3.1, click on **OK**).

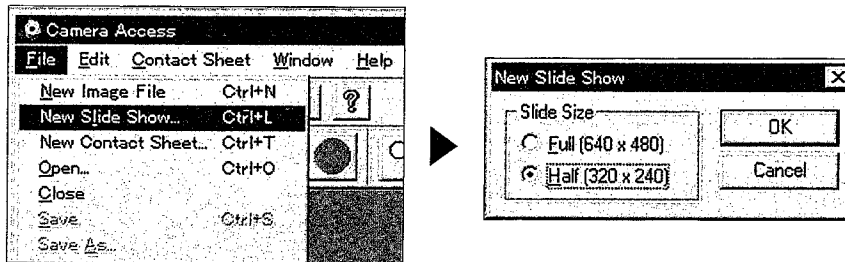
- The thumbnail images will appear in a new contact sheet.



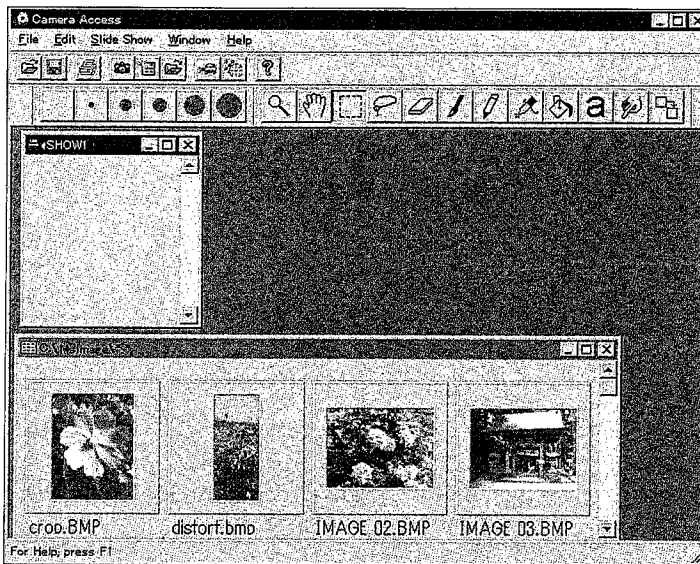
Continued on next page.

SLIDE SHOWS

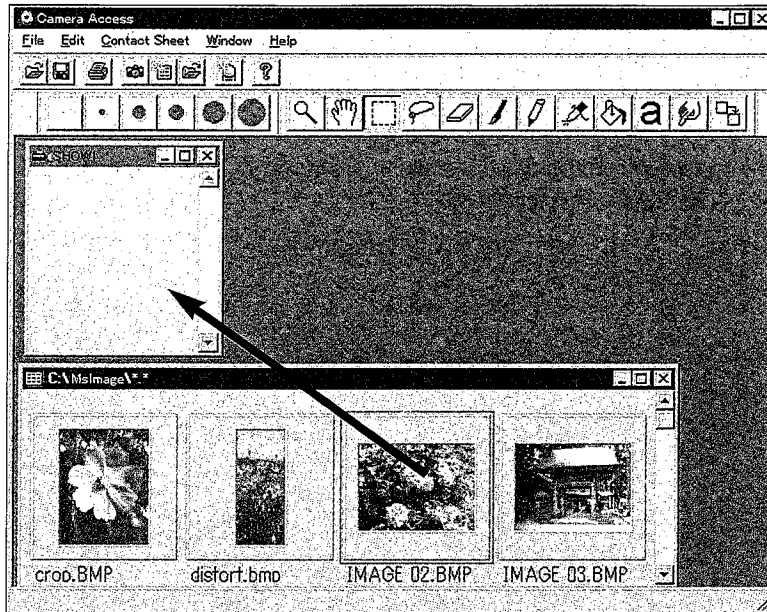
4. With the contact sheet displayed, select **New Slide Show...** from the **File** menu.
 - The New Slide Show dialog box will appear.



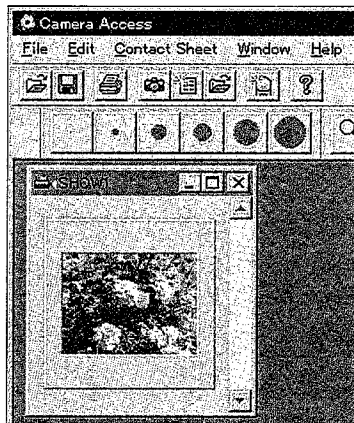
5. Click on the option button next to the desired size of the slide show to select it, then click on **OK**.
 - A new slide show window, titled "Show", will appear.



6. Click on a thumbnail image, then drag it to the Show window and drop it in.



- The image will appear in the Show window.



Continued on next page

SLIDE SHOWS

7. Drag and drop the rest of the desired images into the Show window.

- Select multiple images by holding down the *shift* key while clicking on the images.

8. Close the contact sheet window.

- You are finished creating the slide show, now you can play (p 85), edit (pp 81- 83), or save the slide show (p 84).

EDITING SLIDE SHOWS

Add transition effects between slides and choose the display time of each slide.

Time Delay Options

Wait for Mouse Click - The image will remain on the screen until the mouse button is clicked. The next slide will show after the mouse button is clicked.

Pause - Set the length of time the image will remain on the screen by entering the desired value in the box. If the mouse button is clicked before the set time has passed, the next image will appear.

Transition Type Options

Wipe Down - The slide appears on the screen from top to bottom (with the top appearing first).

Wipe Up - The slide appears on the screen from bottom to top (with the bottom appearing first).

Wipe Left - The slide appears on the screen from right to left (with the right side appearing first). It "wipes" onto the screen in a leftward direction.

Wipe Right - The slide appears on the screen from left to right (with the left side appearing first). It "wipes" onto the screen in a rightward direction.

Fast Dissolve - The slide appears on the screen in many small squares (a random pattern).

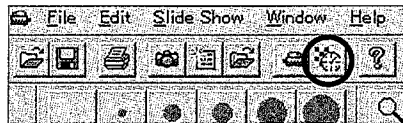
Continued on next page.

SLIDE SHOWS

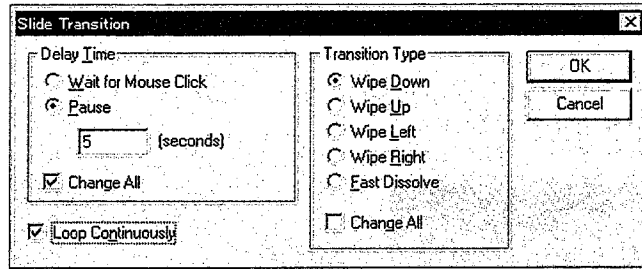
1. Maximize the Show window.



2. Select a slide to receive transition/timing adjustments by clicking on it.
 - A border will appear around the selected image.
3. With a slide selected, click on the Transition button in the toolbar or select **T**ransitions... from the **S**lide Show menu.



- The Slide Transition dialog box will appear.



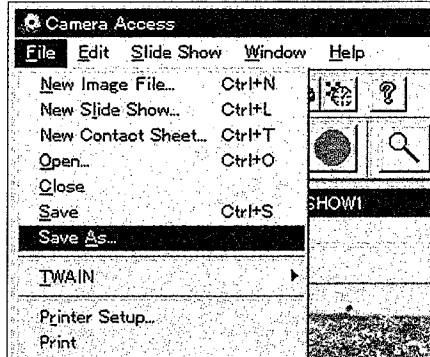
4. Select the delay time (length the slide will remain on the screen) and the transition type (effect that will appear between slides).
- Select the Change All checkbox to apply the options to all the slides in the slide show.
 - If Loop Continuously is checked, the slide show will play repeatedly, until any key on the keyboard is pressed.
 - Only one transition effect and one timing option can be selected for each slide.
- ✎ You can also use the functions from the Edit menu to edit your slide show. Click on the slide to be cut, cleared, or copied and pasted, then select the function.

SLIDE SHOWS

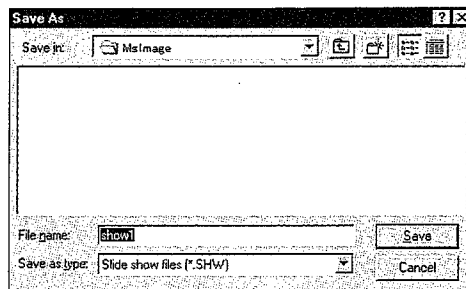
SAVING SLIDE SHOWS

Save your slide show to the hard drive or removable media.

1. With the Show window open, select **Save As...** from the **File** menu.



- The Save As dialog box will appear.

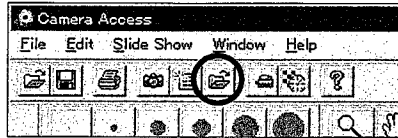


2. Select the folder/directory where the file will be saved.
3. Enter the desired file name in the box labeled File Name.
4. Click on **Save** (for Windows 3.1, click on **OK**).

OPENING SLIDE SHOWS

Open an existing slide show that has been saved to the hard disk or removable media.

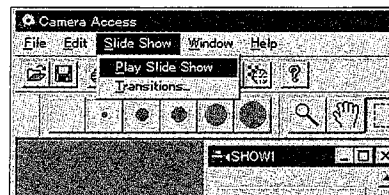
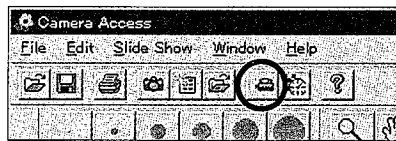
1. Click on the Open Slide Show button in the toolbar.
 - The Open dialog box will appear.



2. Select the folder/directory where the file is stored.
3. Click on the file, then click on **Open** (for Windows 3.1, click on **OK**).

PLAYING SLIDE SHOWS

With the Show window open, click on the Play button in the toolbox or select **Play Slide Show** from the **Slide Show** menu.



- Press any key to quit the slide-show playback and return to the Show window.

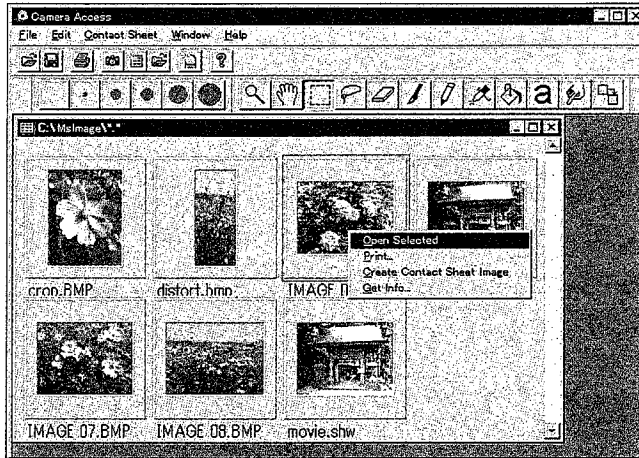
MOUSE TIPS

Throughout the application are instances where clicking on the right-hand mouse button will activate a submenu. These submenus can speed-up operations.

Contact Sheet Submenu

When the previews from images on the hard disk or removable media are displayed, the Contact Sheet submenu is available.

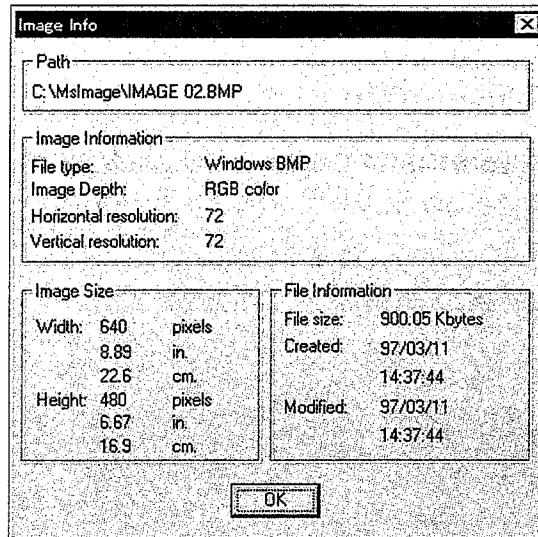
1. Display the thumbnail previews of images on the hard drive or removable media.
2. Choose a thumbnail image and click once on it, then click once on the right mouse button.
 - The Contact Sheet submenu will appear.



The functions in the submenu are listed in the table below.

Open Selected	Display the image in the image panel.
Print...	Print the selected image.
Create Contact Sheet Image	*Creates thumbnail on contact sheet.
Get Info...	Image information will be displayed (see next page).

- The Image Info window appears when **Get Info...** is selected from the Contact Sheet submenu.



- * It is possible to have no thumbnails appear for images on the hard drive or removable media when the viewer panel is open. Select **Preferences** from the **File** menu, then select **Automatically Create Thumbnails** from the submenu to turn it ON or OFF. Automatically Create Thumbnails is ON when a ✓ appears to its left and is OFF when there is no ✓ next to it. When Automatically Create Thumbnails is off, it is possible to have a thumbnail created for a single image by selecting **Create Contact Sheet Image** from the Contact Sheet submenu.

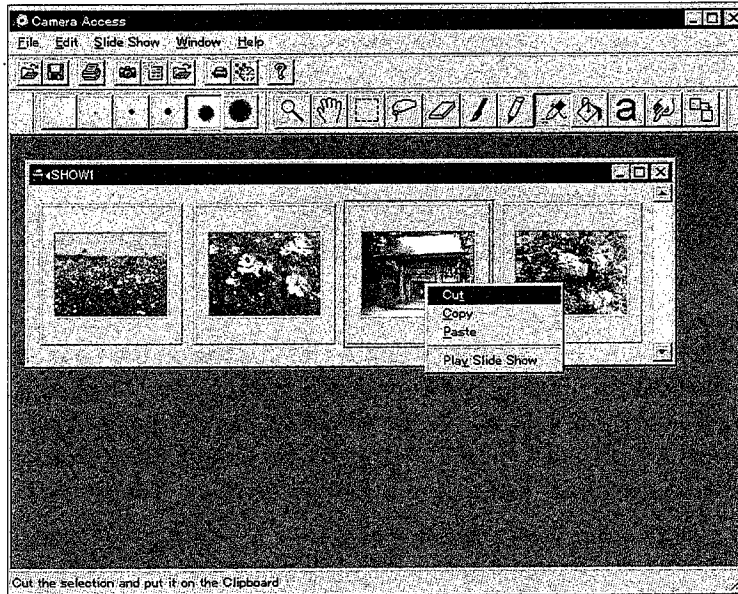
Continued on next page.

MOUSE TIPS

Slide Show Window Submenu

When a slide show is open (not playing) the Slide Show Window submenu is available.

1. Open the existing slide show (p 85).
2. Choose a slide (thumbnail image) and click once on it, then click once on the right mouse button.
 - The Slide Show Window submenu will appear.



The functions in the submenu are listed in the table below.

Cut	Deletes the slide and copies it to the Clipboard.
Copy	Copies the slide to the Clipboard.
Paste	Inserts the current Clipboard item.
Play Slide Show	Plays back the slide show.



MEMO

A large, empty rectangular box with rounded corners, intended for writing a memo. The box is outlined in black and occupies most of the page's width and height. There are two short vertical lines at the top of the page, one on the left and one on the right, positioned above the word 'MEMO'.

MEMO

A large, empty rectangular box with rounded corners, intended for writing a memo. The box is outlined in black and occupies most of the page's width and height.


ADOBE PHOTODELUXE

SYSTEM REQUIREMENTS

- i486 or Pentium processor.
- DOS 6.0 or later with Windows 95 or Windows 3.1.
- Minimum of 16MB available RAM.
- Minimum of 45MB available hard disk space.
- 256-color or greater video card.
- CD-ROM drive.

INSTALLING PHOTODELUXE

1. Turn on the PC and start Windows.
2. Insert the Adobe PhotoDeluxe CD-ROM.
3. **[Windows 3.1]** Select **R**un... from the **F**ile menu in the Program Manager.
[Windows 95] Select **R**un... from the Start button.
 - The Run dialog box will appear.
4. Type **D:\ENGLISH\INSTALL\Setup.exe** in the Command Line box/Open drop-down list.
 - These instructions assume the CD-ROM drive is drive D.
5. Click on **OK**.
6. The Welcome dialog box will appear, click on **Next**.
7. You will be asked to enter the region where the software was purchased, enter the information, then click on **Next**.
8. The Software License Agreement will appear. After reading the license, click on **Yes**.
9. Select the desired set-up type, then click on **Next**.

- 
10. You will be required to enter your name and a serial number. The serial number is located on the last page of the Dimâge V camera manual. Click on **Next**. Confirm the information, then click on **Yes**.
 11. Follow the instructions that appear on the monitor until installation is complete.

STARTING PHOTODELUXE

In Windows 3.1

1. Turn on the computer and start Windows.
2. Open the Adobe PhotoDeluxe program group from the Program Manager.
3. Double-click on the Adobe PhotoDeluxe icon.

In Windows 95

1. Turn on the computer and start Windows.
2. Select **Programs** from the Start button, then choose **Adobe PhotoDeluxe** from the submenu and **Adobe PhotoDeluxe 1.0** from the second submenu.

Minolta Co., Ltd.	3-13, 2-Chome, Azuchi-Machi, Chuo-Ku, Osaka 541, Japan
Minolta Corporation	
Head Office	101 Williams Drive, Ramsey, New Jersey 07446, U.S.A.
Los Angeles Branch	11150 Hope Street Cypress, CA 90630, U.S.A.
Minolta Canada Inc.	
Head Office	369 Britannia Road East, Mississauga, Ontario L4Z 2H5, Canada
Minolta GmbH	Kurt-Fischer-Strasse 50, D-22923 Ahrensburg, Germany
Minolta France S.A.	365 Route de Saint-Germain, F-78420 Carrières-Sur-Seine, France
Minolta (UK) Limited	Rooksley Park, Precedent Drive, Rooksley, Milton Keynes, MK13 8HF, England
Minolta Austria Ges. m.b.H.	Amalienstrasse 59-61, A-1131 Wien, Austria
Minolta Camera Benelux B.V.	Zonnebaan 39, P.O. Box 6000, NL-3600 HA Maarssen, The Netherlands
Minolta (Schweiz) AG	Riedstrasse 6 CH-8953 Dietlikon, Switzerland
Minolta Svenska AB	P.O. Box 9058, Albygatan 114, S-17109 Solna, Sweden
Minolta Hong Kong Limited	Room 208, 2/F, Eastern Center, 1065 King's Road, Quarry Bay, Hong Kong, China
Minolta Singapore (Pte) Ltd.	10, Teban Gardens Crescent, Singapore 608923

© 1997 Minolta Co., Ltd. under the Berne Convention and
Universal Copyright Convention

9222-2755-48 (P9711-8706)

Printed in Japan