

MINOLTA

Digital Camera

Dimâge-Pic

E Software Instruction Manual

Macintosh Version

TABLE OF CONTENTS

Before you Begin.....	1
Checking the Packing List.....	1
Software Registration	1
System Requirements	1
Installing the Software.....	2
Connecting	3
Launching the Application	4
Setup	5
IMS Camera Main Window	6
Viewing Images	7
Viewing Thumbnail Images	7
Viewing a Full-size Image	7
Saving	8
Saving From the Main Window	8
Saving From the Full-size Image Window	9
Printing	10
Printing a Full-size Image.....	10
Printing Thumbnail Images	11
Rotate	12
Remote Camera Operation	13
Taking Pictures	13
Erasing Images	13

Every necessary precaution has been taken to ensure the accuracy of this manual. Minolta is not responsible for loss, damage, or other results caused by operation.

No part of books, magazines, music, or other productions that were released under copyright may be used, copied, or changed without the prior permission of the author, copyright holder, or the successor to the copyright holder except for personal, home, or equivalent use.

Macintosh®, Apple®, the Apple logo, and Power Macintosh® are registered trademarks of Apple Computer, Inc.

BEFORE YOU BEGIN

CHECKING THE PACKING LIST

Check the packing list before you begin. If some parts are missing, contact your camera dealer or a Minolta Service Facility.

- Dimâge-Pic Digital Camera
- Video Cable VC-P1
- Camera Case CC-P1
- Warranty/Product & Software Registration Card
- Dimâge-Pic Image Control Software CD-ROM
- Serial Cable SC-P1W for Windows
- Serial Cable SC-P1M for Macintosh
- Hand Strap HS-P1

SOFTWARE REGISTRATION

Please register this software before using it.

You will receive technical support, as well as software upgrade and product information once this software is registered. Complete and return the enclosed Product & Software Registration form after detaching it from the Warranty. No postage is necessary.

- The information provided in the questionnaire will only be used for Minolta customer service and product research & development. The information you provide will be kept private and confidential.

SYSTEM REQUIREMENTS

- All Macintosh models with a 68030 processor or better
- System 7.1 or greater
- 8MB RAM
- 5MB available hard disk space
- Modem port
- CD-ROM drive
- Mouse or other pointing device

INSTALLING THE SOFTWARE

This software can be operated directly from the CD-ROM or it can be installed onto your hard drive.

1. Insert the Dimâge-Pic Image Control Software CD-ROM into the CD-ROM drive.

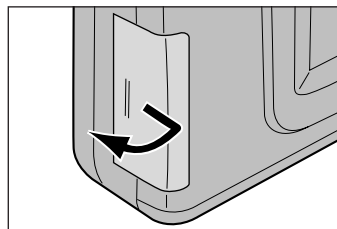
- The CD-ROM will open automatically.

2. Drag and drop the IMS Camera icon and the Read Me file to the desired location.

- ✎ The Read Me file contains important information about the IMS Camera software. It may include information that is not covered in this instruction manual.

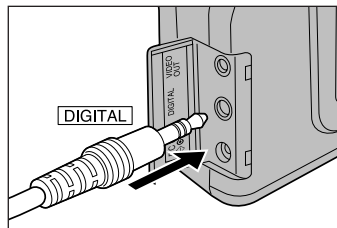
CONNECTING

Use the SC-P1M serial cable, included in this package, to connect the Dimâge-Pic to your computer.

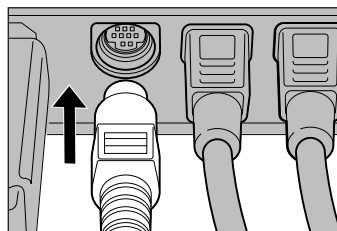


1. Turn off the Dimâge-Pic and your computer.

2. Open the terminal cover as shown.



3. Insert the jack-plug end of the serial cable into the digital out terminal on the camera.




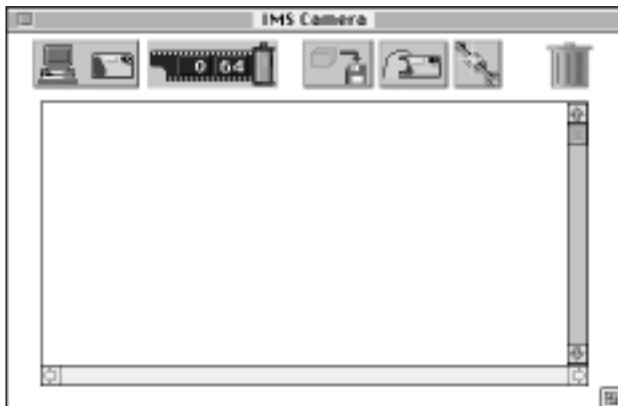
4. Plug the other end of the cable into the modem port of the computer.

- Make sure the cable is securely attached to the camera and the computer.

- ✎ If the cable is disconnected during operation: turn the camera off, connect the cable, then turn the camera back on.

LAUNCHING THE APPLICATION

1. Connect the camera to the computer (p 3).
2. Turn the camera on, then start up the computer.
3. Open the folder where IMS Camera was saved.
 - If operating the software directly from the CD-ROM, insert the CD-ROM. The CD-ROM will open automatically.
4. Double click on the IMS Camera icon  .
 - The IMS Camera main window will appear.



SETUP

Before saving the images from the camera (p 8) you should first confirm the Setup configuration. The items in Setup will determine the size and file type of a saved image. They will also determine the size of your full-size image (p 7). The transfer speed between the camera and computer is also determined in this window.

1. Click on the Setup button  .
 - The following dialog box will appear.



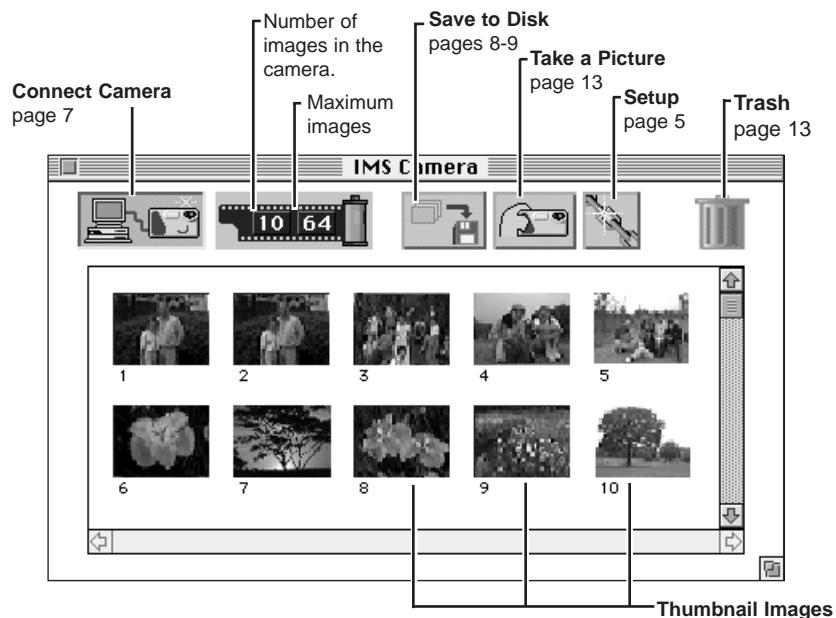
Data Transfer Speed
Determines the speed of communication between your camera and the computer.
High = 57600 bps
Medium = 38400 bps
Low = 9600 bps

Picture Size
Larger = 480x360 pixels
Normal = 320x240 pixels

Picture Format
PICT - graphic file format compatible with many Macintosh applications.
JPEG - widely supported image file format; provides file compression.

2. Enter the desired settings, then click on **OK**.

IMS CAMERA MAIN WINDOW



Camera not connected to the software.



Camera connected to the software.

VIEWING IMAGES

With the camera connected and the software launched, you can easily view the thumbnail previews of all the images stored in the camera. You can also display the full size image of a selected thumbnail preview.

VIEWING THUMBNAIL IMAGES

Click on the Connect Camera button .

- The thumbnail representations of images stored in the camera will be displayed.

Connect Camera button



VIEWING A FULL-SIZE IMAGE

Double-click on the thumbnail of the desired image.

- The image will be displayed in the size selected in Setup (p 5).



The full size image can be copied to the Macintosh clipboard using **Copy** from the **Edit** menu, then pasted into another application.

SAVING

SAVING FROM THE MAIN WINDOW

1. Click once on the thumbnail of the desired image.

- Select multiple images by pressing the *Shift* key while clicking. Deselect an image by clicking on it while pressing the *Shift* key.

2. Click on the Save to Disk button .



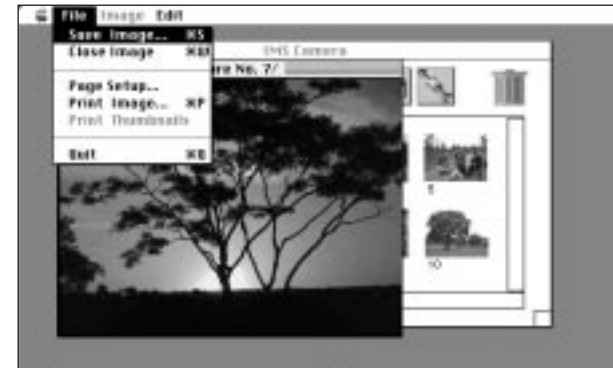
- The standard Save As dialog box will appear.

3. Name the file, select the location where the file will be saved, then click on **Save**.

- The file will be saved in the file type and size selected in Setup (p 5).
- The frame number will appear at the end of the file name. Example - one image saved with the file name "Flower": Flower 08. Example - two images saved using the file name "Flower": Flower 02, Flower 08.

SAVING FROM THE FULL-SIZE IMAGE WINDOW

1. With a full-size image displayed (p 7), from the **File** menu select **Save Image....**



- The standard Save As dialog box will appear.

2. Name the file, select the location where the file will be saved, then click on **Save**.

- The file will be saved in the file type and size selected in Setup (p 5).

PRINTING

PRINTING A FULL-SIZE IMAGE

1. Display a full-size image (p 7).
2. From the **File** menu select **Page Setup....**
 - The standard Page Setup dialog box will appear. Select the desired specifications, then click on **OK**.

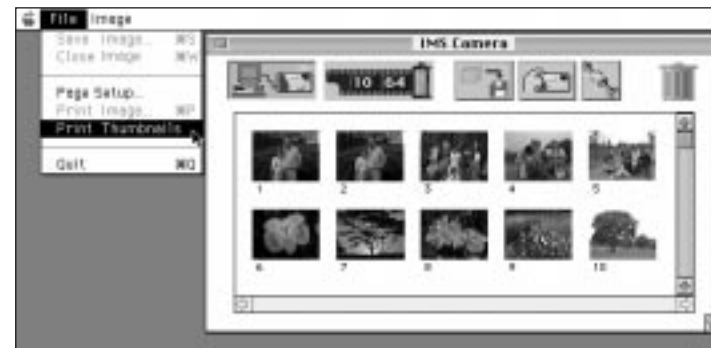


2. From the **File** menu, select **Print Image....**
 - A standard Print dialog box will appear.
3. Select the desired options, then click on **Print**.

PRINTING THUMBNAIL IMAGES

Print all the thumbnail images from the camera.

1. Display the thumbnail images (p 7).
2. From the **File** menu select **Page Setup....**
 - The standard Page Setup dialog box will appear. Select the desired specifications, then click on **OK**.

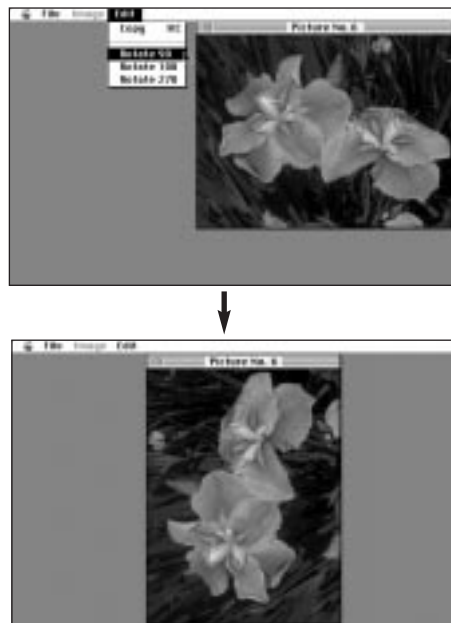


3. From the **File** menu, select **Print Thumbnails**.
 - A standard Print dialog box will appear.
4. Select the desired options, then click on **Print**.

ROTATE

Rotate the full-size view of an image 90°, 180°, or 270° (all counter-clockwise).

1. Display a full-size image (p 7).
2. From the **Edit** menu, select either **Rotate 90**, **Rotate 180**, or **Rotate 270**.





- The view of the image will not be changed in the main window or in the camera.
- Rotation changes will be lost when the image window is closed. When saving the image (p 9), the image will be saved as rotated.

REMOTE CAMERA OPERATION


TAKING PICTURES

Take pictures with the camera from your computer.

1. Use the camera's record/play switch to set the camera to REC, then turn the camera on.
2. Click on the Connect Camera button .
3. Click on the Take a Picture button .
 - When the camera is finished processing, the thumbnail display for the new image will appear automatically.

ERASING IMAGES

Erase selected images from the camera or delete all the camera contents.

1. Use the camera's record/play switch to set the camera to PLAY and turn the camera on.
2. If deleting selected images, select the images to be deleted by clicking on the desired thumbnail.
3. Drag the thumbnails to the Trash  in the Main Window.
If erasing all the images, simply select **Delete All** from the **Image** menu.
 - There will be no confirmation message. The images will be permanently removed from the camera without further warning.

Mitsubishi Co., Ltd.
Mitsubishi Corporation
Head Office
Los Angeles Branch
Mitsubishi Canada Inc.
Head Office

3-13, 2-Chome, Azuchi-Machi, Chuo-Ku, Osaka 541, Japan
101 Williams Drive, Ramsey, New Jersey 07446, U.S.A.
11150 Hope Street Cypress, CA 90630, U.S.A.
369 Britannia Road East, Mississauga, Ontario L4Z 2H5, Canada

© 1997 Mitsubishi Co., Ltd. under the Berne Convention and
Universal Copyright Convention

9222-2759-37

Printed in Taiwan