

This manual does not provide instructions for the basic operation of personal computers, or the basic operation of Windows® operating system. Please refer to the manual that came with your computer for information on the above mentioned topics.

- Microsoft® and Windows® are registered trademarks in the United States and other countries of Microsoft Corporation.
- The official name of Windows® is Microsoft® Windows® Operating System.
- Pentium® is a registered trademark of Intel Corporation.
- Adobe® and Photoshop™ are registered trademarks of Adobe Systems Incorporated.
- Other company and product names are the trademark or registered trademark of their respective owners.

**BEFORE YOU BEGIN**  
    USER REGISTRATION .....4  
    TERMS USED IN THIS MANUAL.....5

**SYSTEM REQUIREMENTS** .....6

**INSTALLING THE SOFTWARE** .....8

**INSTALLING THE ADOBE PHOTOSHOP 5.0LE** .....10

**CONNECTING THE CAMERA TO THE PC** .....11

**LAUNCHING THE SOFTWARE**  
    LAUNCHING THE UTILITY SOFTWARE .....14  
    LAUNCHING THE TWAIN DRIVER.....16

**USING THE SOFTWARE**  
    COPYING IMAGE FILES TO THE HARD DRIVE .....21  
    ACQUIRING IMAGES INTO THE APPLICATION .....21

    DELETING IMAGE FROM THE CF CARD.....26

    VIEWING IMAGE FILE PROPERTIES .....28

    QUITTING THE UTILITY SOFTWARE .....30  
    QUITTING THE TWAIN DRIVER.....31

**USER REGISTRATION**

---

Please register this software before you begin using it. Complete both sides of the enclosed user registration card, detach along the perforated line, and mail. No postage is necessary.

Persons who register their software are recognized as official users, and receive technical support as well as software upgrade and other new product information.

- Please be aware that you will not receive any notification of registration from Minolta.
- The information contained on your registration card is used exclusively by Minolta for customer service and product development. The information you provide will be kept private and confidential.

**TERMS USED IN THIS MANUAL**

---

- This manual assumes that your computer's operating system (Windows®98) as well as other necessary software such as device drivers have been installed, and are operating properly.
- This manual assumes the use of a two-button, right-handed mouse for Windows®. The terms 'click' and 'double-click' refer to a single or double click of the left mouse button. The term 'drag' refers to the action of holding down the left mouse button while moving the mouse.

The system requirements for the operation of this software are as shown below:

	<b>IBM PC/AT compatible computers</b>
<b>Computers</b>	IBM PC/AT compatible computers <sup>1</sup>
<b>CPU</b>	Intel Pentium Processor 90MHz or higher
<b>OS</b>	Windows®98, Windows®98 Second Edition <sup>2</sup>
<b>RAM</b>	A minimum of 32MB of RAM
<b>Hard Disk Space</b>	80MB or more of free hard disk space for use as workspace
<b>Monitor</b>	VGA (640 x 480) or higher/High Color (16-bit)
<b>CD-ROM Drive</b>	Required for installation
<b>Interface</b>	USB (Universal Serial Bus) <sup>3</sup>
<b>Others</b>	TWAIN driver is compatible with Adobe Photoshop Ver. 4.0.1, 5.0.2, and 5.5, Adobe Photoshop LE Ver. 5.0, Paint Shop Pro 5.0, and 6.0, and Corel Photo Paint 9

- 1 Not including computers built from kits, shop-brands or other computers for which components have been selected and assembled individually.
- 2 Pre-installed Windows®98/Windows®98 Second Edition only. Windows®98 upgraded from Windows®95 does not be guaranteed.
- 3 USB (Universal Serial Bus) port that each PC maker guarantees to operate without problem.

Use the following procedure to install Dimâge 2300 software on your computer.

The following explanation refers to the hard disk drive as drive C and the CD-ROM drive as drive D.

**1 Turn the computer on to start up Windows®98.**

**2 Insert the Dimâge 2300 CD-ROM into the CD-ROM drive.**

- The Choose Setup Language window opens.



**3 Select the language for the installation and click on 'OK'.**

- The Dimage 2300 Setup program opens.



- In the event that the Dimage 2300 Setup program does not open automatically, click on the Start button, and then click on Run. Enter D:\Setup.exe in the text box and click on OK.

**4 Click on 'Next >'.**

- The Select Components window will appear.



**5 Make sure that the checkbox is marked, then click on 'Next >'.**

- Setup will begin. After copying files, the building of driver information database will start automatically.
- After building driver information database, the following window will appear.



**6 Remove any disks from their drives, then click on 'Finish'.**

- The Setup program will complete and Windows® will be restarted.

## INSTALLING THE ADOBE PHOTOSHOP 5.0LE

Use the following procedure to install Adobe Photoshop 5.0 Limited Edition on your computer.  
This installation instruction assumes that the drive D or C is a CD-ROM or a hard disc drive respectively.

- 1 Turn on the computer and start the up Windows®98.**
- 2 Insert the Adobe Photoshop 5.0 Limited Edition CD-ROM into the CD-ROM drive.**
- 3 Select Start > Run... and input 'D:\ENGLISH\install.wri' in the Open: box and then click on OK.**
  - 'Read Me file' will appear. Read the content and confirm it.
- 4 Select Start > Run... and input 'D:\ENGLISH\PHOTOSLE\Setup.exe' in the Open: box and then click on OK.**
  - Adobe Photoshop 5.0 Limited Edition Setup program opens.

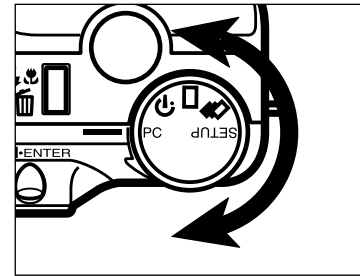


- 5 Click on 'Next >', then follow the direction on the screen.**

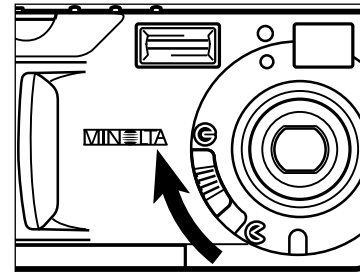
## CONNECTING THE CAMERA TO THE PC

Connect the Dimâge 2300 and your personal computer.

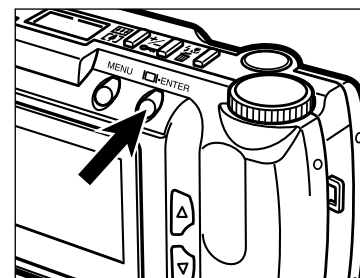
- 1 Turn the computer on to start up Windows®98.**



- 2 Turn the Function dial of the camera to PC.**

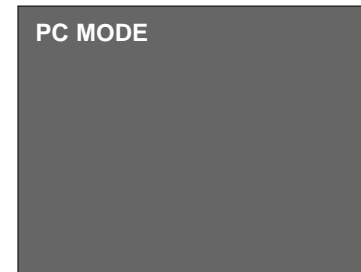


- 3 Move the lens cover slide to G.**



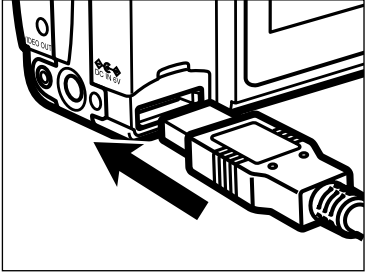
- 4 Press and hold the display/ENTER button about one second.**

- The camera will be turned on and "PC MODE" will appear in the upper-left corner of the camera's LCD monitor.



## CONNECTING THE CAMERA TO THE PC - CONT'D

---



**5** Attach the one end which has wider plug of the USB cable to the Dimâge 2300 USB/Serial connector.

**6** Attach the other end of the USB cable to the USB port on the personal computer.

- *After connecting the Dimâge 2300 to the personal computer, Windows® system will detect the Dimâge 2300 as a new hardware (New Hardware Found window will appear), and will install necessary files automatically.*

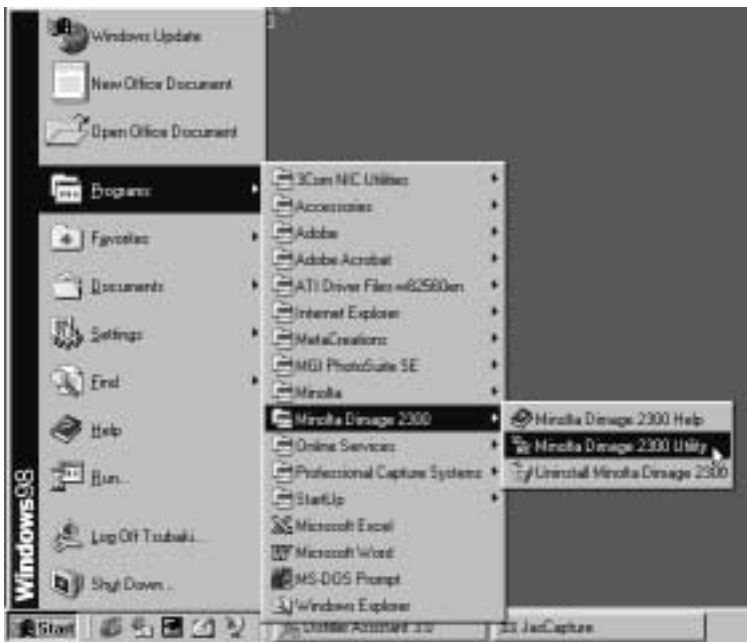
## LAUNCHING THE SOFTWARE

Following explanation is on the assumption that the Dimâge 2300 has already been connected to the personal computer (see pages 11 to 12).

LAUNCHING THE UTILITY SOFTWARE

**1** Select Start → Programs → Minolta Dimage 2300 → Minolta Dimage 2300 Utility.

- Dimage 2300 utility main window shown at the right will appear.



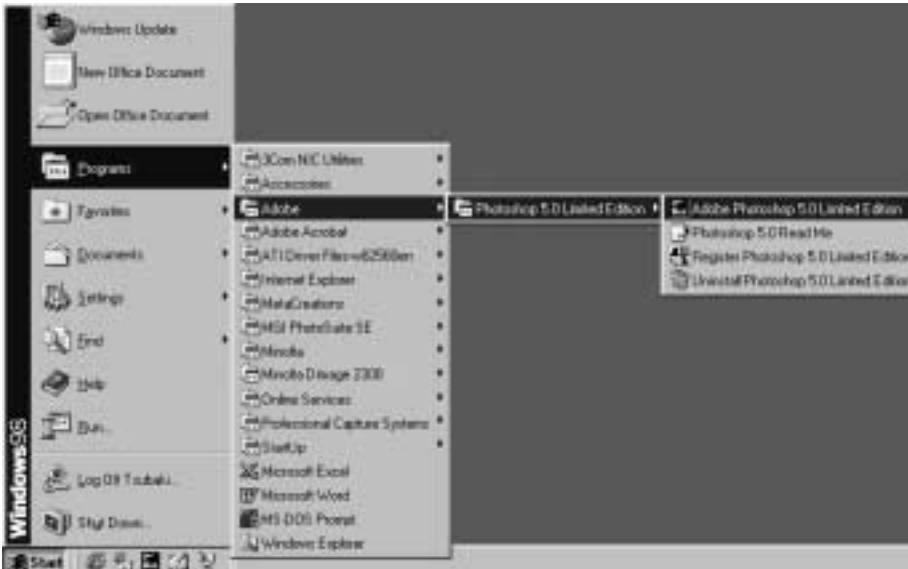
If there are a few TIFF files (image files that would be taken with SUPER FINE image quality) or too many image files in the CF card, it will take much time until launching the utility software.  
For example, 300 image files that would be taken with ECONOMY image quality are saved in the CF card, it will take approx. 5 minutes until launching the utility software.

LAUNCHING THE TWAIN DRIVER

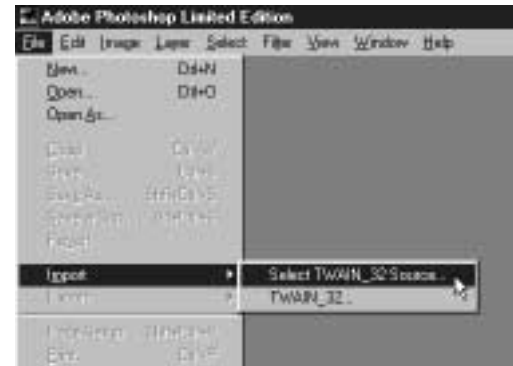
This example uses Adobe Photoshop 5.0 Limited Edition as a TWAIN compliant application. The procedure will vary for other applications. See the operating manual for your application.

**1** Select Start → Programs → Adobe → Photoshop 5.0 Limited Edition → Adobe Photoshop 5.0 Limited Edition.

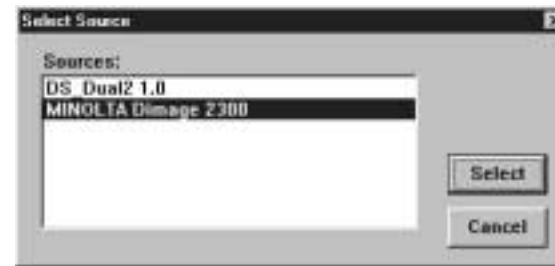
- Adobe Photoshop Limited Edition window shown at the right will appear.



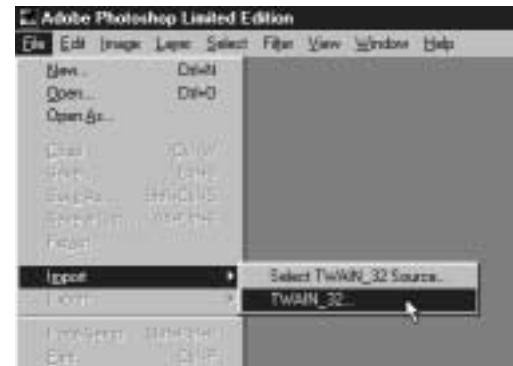
**2** Select File → Import → Select TWAIN\_32 Source....



**3** Select 'MINOLTA Dimage 2300' from the source list, then click on Select.



**4** Select File → Import → TWAIN\_32....



Continued on Next Page

- Dimage 2300 utility main window will be opened on the Adobe Photoshop Limited Edition window.



When the computer is unable to detect a connection to the Dimage 2300, the following error message opens.



In such a case, perform the following troubleshooting operations:

**1) Click on 'OK' to close the error message window.**

**2) Check the following:**

- *Did you turn on the Dimage 2300?*
- *Is the USB cable connected properly?*
- *Has the USB cable separated from a connector?*
- *Has the USB cable been cut or damaged?*
- *Did you set the Function dial of the Dimage 2300 to PC?*
- *Did you insert the CF (compact flash) card into the Dimage 2300?*

**3) After verifying that all of the above have been performed properly, try to connect to the Dimage 2300 again, following the instructions on pages 11 to 12.**

# USING THE SOFTWARE

## USING THE SOFTWARE

### COPYING IMAGE FILES TO THE HARD DRIVE

### ACQUIRING IMAGES INTO THE APPLICATION

#### When using Dimâge 2300 Utility software

Copy some or all of the image files saved in the compact flash card to your computer's hard drive or other memory device.

#### When using TWAIN driver

Acquire some or all of images into the image processing application.

#### 1 Click on the images to be copied or acquired.

- The selected image(s) will be highlighted.
- To select two or more images, press and hold *Ctrl* (Control) key and click on the images to be copied or acquired.
- To select all the images, click on '**Select All**' in the display.

<Dimage 2300 Utility Software>



<TWAIN Driver>

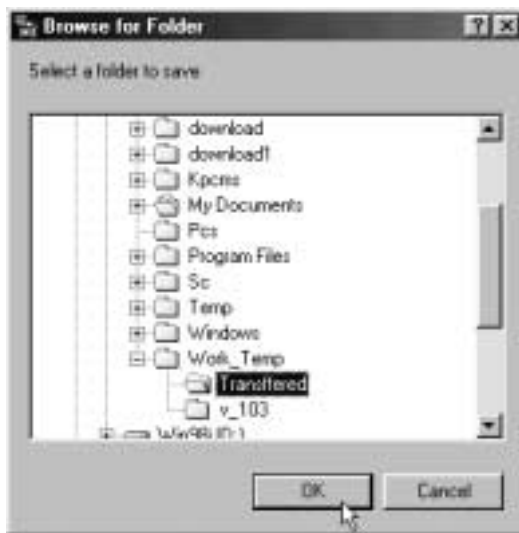


Continued on Next Page

When using the Dimâge 2300 Utility Software:

**2** Click on 'Transfer'.

- The Select a Folder dialog box opens.



**3** Select the folder to which the files are to be copied, and click on 'OK'.

- The selected image files begin to copy. When finished, Dimage 2300 utility software main window will appear.

When using the TWAIN Driver:

**2** Click on 'Transfer'.

- The acquire function will start. When the image is being acquired, a bar graph will show the progress of completion.
- When complete, images are acquired into the TWAIN compliant application (in this case, the Adobe Photoshop Limited Edition), and will be displayed on the monitor.



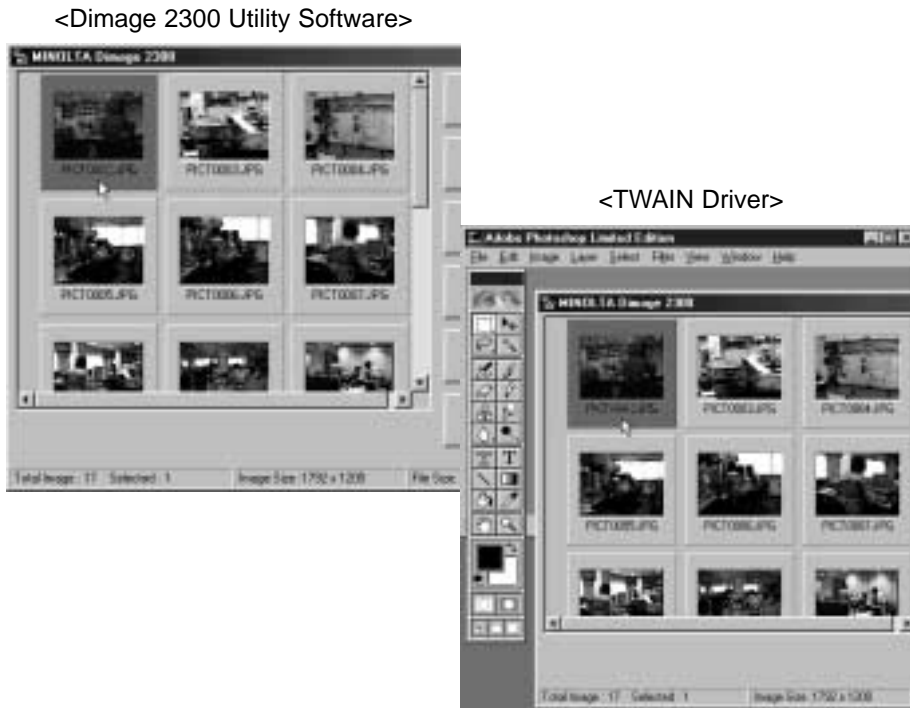
- Further operations on the image are passed on to Adobe Photoshop 5.0 Limited Edition. Refer to the Adobe Photoshop 5.0 Limited Edition's manual for details.
- The Adobe Photoshop 5.0 Limited Edition's manual is saved in the Adobe Photoshop 5.0 Limited Edition CD-ROM as a PDF file.

**DELETING IMAGE FROM THE CF CARD**

Some or all of the images can be deleted from the compact flash (CF) card.

**1 Click on the images to be deleted.**

- The selected image(s) will be highlighted.
- To select two or more images, press and hold *Ctrl* (Control) key and click on the images to be deleted.
- To delete all the images, click on **'Select All'** in the display.



**2 Click on 'Erase Photo'.**

- The confirmation message will appear.

<Dimage 2300 Utility Software>



**3 Click on 'Yes' to delete images. Click on 'No' to cancel the operation.**

**VIEWING IMAGE FILE PROPERTIES**

Use the following procedure to view image file properties such as capture date, image size.

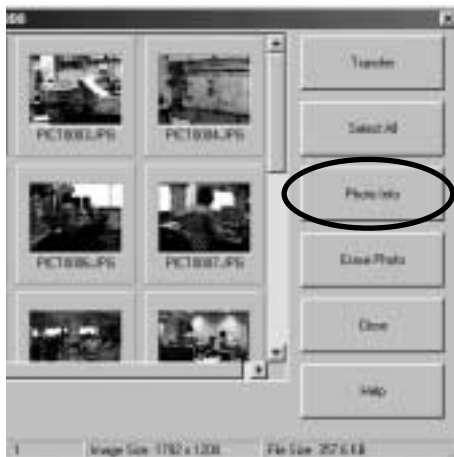
**1 Click on the image you wish to view the properties.**

- The selected image will be highlighted.

**2 Click on 'Photo Info'.**

- The properties of selected image file will be displayed.

<Dimage 2300 Utility Software>



<TWAIN Driver>

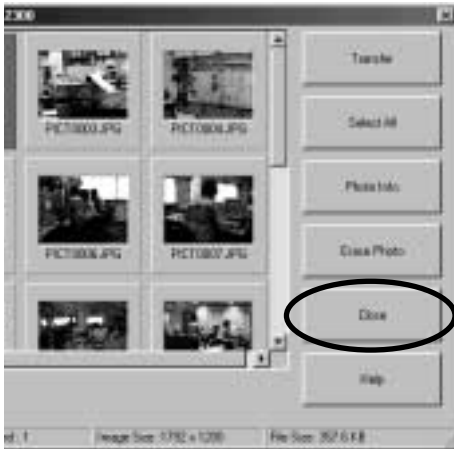


### QUITTING THE UTILITY SOFTWARE

**1** Click on 'Close' in the Dimage 2300 utility main window.

- The utility software will quit.

<Dimage 2300 Utility Software>



### QUITTING THE TWAIN DRIVER

**1** Click on 'Close' in the Dimage 2300 utility main window.

- The TWAIN driver will quit and the display will return to the TWAIN compliant application (in this case, Adobe Photoshop 5.0 Limited Edition).

<TWAIN Driver>



**MEMO**

A large, empty, rounded rectangular box with a thin black border, occupying most of the page area below the header and above the footer. It is intended for handwritten notes or a memo.

**MEMO**

A large, empty, rounded rectangular box with a thin black border, occupying most of the page area below the header and above the footer. It is intended for handwritten notes or a memo.

**MEMO**

A large, empty rounded rectangular box with a thin black border, occupying most of the page area below the header and above the footer.

**MEMO**

A large, empty rounded rectangular box with a thin black border, occupying most of the page area below the header and above the footer.

**MEMO**

A large, empty, rounded rectangular box with a thin black border, occupying most of the page area below the header and above the footer. It is intended for handwritten notes or a memo.

**MEMO**

A large, empty, rounded rectangular box with a thin black border, occupying most of the page area below the header and above the footer. It is intended for handwritten notes or a memo.

# MINOLTA

## *Dimâge 2300*

### **E** Software Instruction Manual

<b>Minolta Co., Ltd.</b>	<b>3-13, 2-Chome, Azuchi-Machi, Chuo-Ku, Osaka 541-8556, Japan</b>
<b>Minolta Corporation</b>	
<b>Head Office</b>	101 Williams Drive, Ramsey, New Jersey 07446, U.S.A.
<b>Los Angeles Branch</b>	11150 Hope Street Cypress, CA 90630, U.S.A.
<b>Minolta Canada Inc.</b>	
<b>Head Office</b>	369 Britannia Road East, Mississauga, Ontario L4Z 2H5, Canada
<b>Minolta Europe</b>	Kurt-Fischer-Strasse 50, D-22923 Ahrensburg, Germany
<b>Minolta France S.A.</b>	365 Route de Saint-Germain, F-78420 Carrières-Sur-Seine, France
<b>Minolta (UK) Limited</b>	7 Tanners Drive, Blakelands, Milton Keynes, MK14 5BU, England
<b>Minolta Austria Ges. m.b.H.</b>	Amalienstrasse 59-61, A-1131 Wien, Austria
<b>Minolta Camera Benelux B.V.</b>	Zonnebaan 39, P.O. Box 6000, NL-3600 HA Maarssen, The Netherlands
<b>Belgium Branch</b>	Prins Boudewijnlaan 1, B-2550 Kontich, Belgium
<b>Minolta (Schweiz) AG</b>	Riedstrasse 6, CH-8953 Dietikon, Switzerland
<b>Minolta Svenska AB</b>	Albygatan 114, S-171 54 Solna, Sweden
<b>Finland Branch</b>	Niittykatu 6 PL 37, SF-02201 Espoo, Finland
<b>Minolta Portugal Limitada</b>	Av. do Brasil 33-A, P-1700 Lisboa, Portugal
<b>Minolta Hong Kong Limited</b>	Room 208, 2/F, Eastern Center, 1065 King's Road, Quarry Bay, Hong Kong
<b>Minolta Singapore (Pte) Ltd.</b>	10, Teban Gardens Crescent, Singapore 608923

© 2000 Minolta Co., Ltd. under the Berne  
Convention and Universal Copyright Convention

*For Windows®98*

*For USB Connection*