

This manual does not provide instructions for the basic operation of personal computers, or the basic operation of Mac OS (Macintosh Operating System). Please refer to the manual that came with your computer for information on the above mentioned topics.

- Apple, the Apple logo, Macintosh, Power Macintosh, Mac OS and the Mac OS logo are registered trademarks of Apple Computer Inc.
- Other company and product names are the trademark or registered trademark of their respective owners.

<b>BEFORE YOU BEGIN</b>	
USER REGISTRATION .....	4
TERMS USED IN THIS MANUAL.....	5
<b>SYSTEM REQUIREMENTS .....</b>	<b>6</b>
<b>INSTALLING THE SOFTWARE .....</b>	<b>8</b>
<b>INSTALLING THE ADOBE PHOTOSHOP LE .....</b>	<b>10</b>
<b>INSTALLING THE ADOBE PHOTOSHOP PLUG-IN .....</b>	<b>12</b>
<b>CONNECTING THE CAMERA TO THE PC.....</b>	<b>13</b>
<b>LAUNCHING THE SOFTWARE .....</b>	<b>16</b>

<b>USING THE SOFTWARE</b>	
ACQUIRING IMAGES INTO THE APPLICATION .....	21
DELETING IMAGE FROM THE CF CARD.....	24
VIEWING IMAGE FILE PROPERTIES .....	26
QUITTING THE PLUG-IN MODULE.....	28

### USER REGISTRATION

---

Please register this software before you begin using it. Complete both sides of the enclosed user registration card, detach along the perforated line, and mail. No postage is necessary.

Persons who register their software are recognized as official users, and receive technical support as well as software upgrade and other new product information.

- Please be aware that you will not receive any notification of registration from Minolta.
- The information contained on your registration card is used exclusively by Minolta for customer service and product development. The information you provide will be kept private and confidential.

### TERMS USED IN THIS MANUAL

---

- This manual assumes that your computer's operating system (Mac OS) as well as other necessary software such as device drivers have been installed, and are operating properly.
- If you are using Mac OS, the term 'Command Key' refers to the key located next to the space Bar.

The system requirements for the operation of this software are as shown below:

	<b>Apple Macintosh Series computers</b>
<b>Computers</b>	Macintosh that has built-in USB port as standard interface such as Blue & White Power Macintosh G3 Series, Power Macintosh G4 Series, iMac, iMac DV, iBook, and PowerBook G3 Series
<b>CPU</b>	PowerPC
<b>OS</b>	Mac OS 8.6 to Mac OS 9.0.4
<b>RAM</b>	32MB or more of free memory
<b>Hard Disk Space</b>	80MB or more of free hard disk space for use as workspace
<b>Monitor</b>	13" (640 x 480 dots) or higher/32000 Colors
<b>CD-ROM Drive</b>	Required for installation
<b>Interface</b>	USB (Universal Serial Bus)
<b>Others</b>	Plug-in module is compatible with Adobe Photoshop Ver. 4.0.1, 5.0.2, and 5.5, Adobe Photoshop LE Ver. 5.0

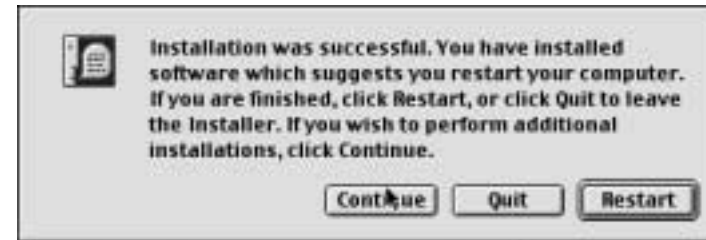
Use the following procedure to install Dimàge 2300 software on your Macintosh.

The virus protection tools and the control panel documentation can be the cause of problems during installation. These programs should be removed from your system or temporarily disabled during installation.

- 1** Turn on the Macintosh.
- 2** Once the desktop opens, insert the Dimàge 2300 CD-ROM into the CD-ROM drive.
- 3** Once the CD-ROM is mounted, double-click on its icon.
- 4** Double-click on the 'Driver' folder, then double-click on the 'English' folder.
- 5** Double-click on the 'Dimage 2300 Installer' icon.
  - The Dimage 2300 installer screen will appear.



- 6** Choose the volume that the software will be installed, then click on 'Install'.
  - Installation will begin. A folder named "Dimage 2300" will be created on your selected volume and the software will be installed in this folder. The USB driver files will be installed in the Extensions folder in the System folder of the startup disk (volume).
  - When installation is complete, a message will appear informing you installation was successful.



- 7** Click on 'Restart' to restart your Macintosh.

Use the following procedure to install Adobe Photoshop LE on your computer.

- 1** Turn on the Macintosh.
- 2** Once the desktop opens, insert the Adobe Photoshop LE CD-ROM into the CD-ROM drive.
- 3** Once the CD-ROM is mounted, double-click on its icon.

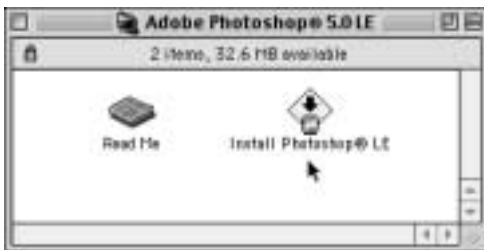
- The following screen will appear.



- 4** Double-click on English folder to open it.



- 5** Double-click on Adobe Photoshop®5.0 LE folder to open it.



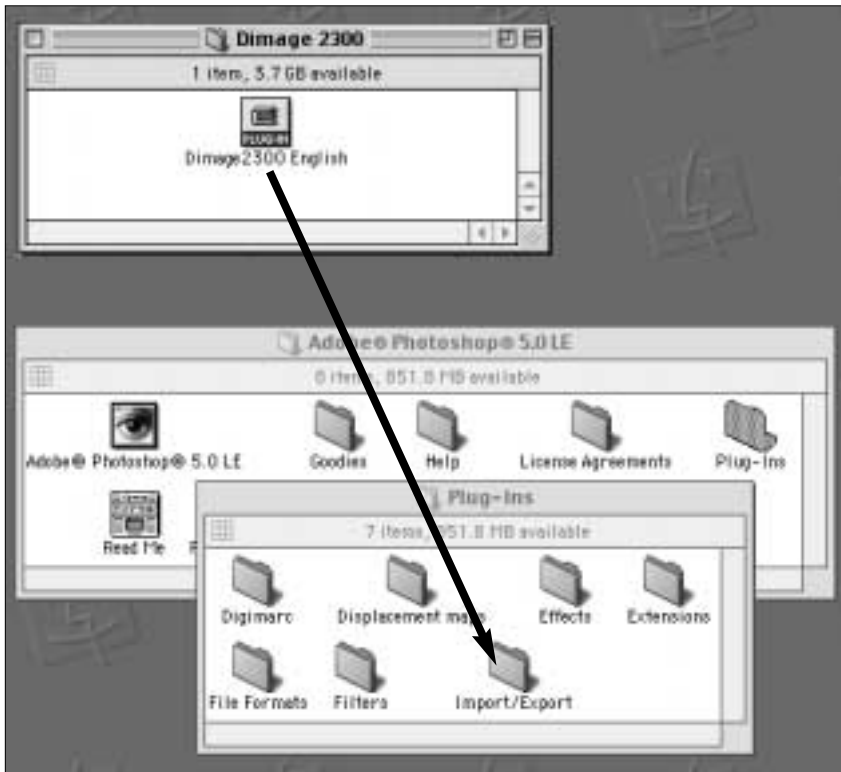
- 6** Double-click on Install Photoshop®LE icon, then follow the direction on the screen.

*When an Adobe Photoshop 5.0 LE has been already installed to your Macintosh before the Dimage 2300 software installation, an alias of the Adobe Photoshop Plug-in [Dimage2300 English] will be created in the Import/Export folder in the Plug-Ins folder located in the Adobe Photoshop 5.0 LE folder during the Dimage 2300 software installation. In this case, you can skip the "INSTALLING THE ADOBE PHOTOSHOP PLUG-IN" operation described on next page.*

## INSTALLING THE ADOBE PHOTOSHOP PLUG-IN

Once the installation procedure is complete, move the Dimage 2300 Import Plug-in from the folder the software has been installed to the appropriate folder for the host application (in this example, Adobe Photoshop 5.0 LE).

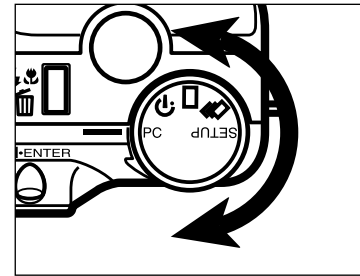
- 1** Close Adobe Photoshop 5.0 LE, if open.
- 2** Open the Adobe Photoshop 5.0 LE folder.
- 3** Open the Plug-ins folder located in the Adobe Photoshop 5.0 LE folder.
- 4** Open the folder that the software has been installed (in this example, 'Dimage 2300' folder).
- 5** Drag the Dimage2300 English to the Import/Export folder of the Plug-ins folder.



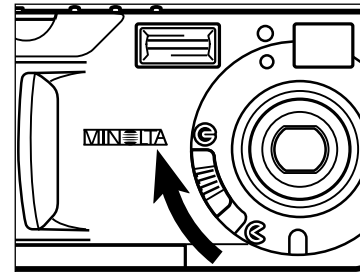
## CONNECTING THE CAMERA TO THE PC

Connect the Dimage 2300 and your personal computer.

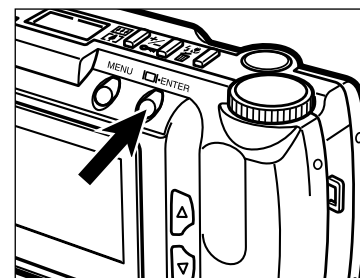
- 1** Turn the Macintosh on to start up Mac OS.



- 2** Turn the Function dial of the camera to PC.

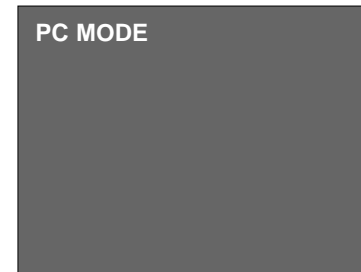


- 3** Move the lens cover slide to ☉.



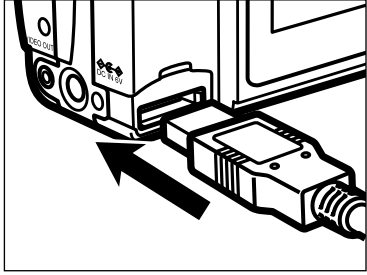
- 4** Press and hold the display/ENTER button about one second.

- The camera will be turned on and "PC MODE" will appear in the upper-left corner of the camera's LCD monitor.



## CONNECTING THE CAMERA TO THE PC - CONT'D

---



**5** Attach the one end which has wider plug of the USB cable to the Dimâge 2300 USB/Serial connector.

**6** Attach the other end of the USB cable to the USB port on the Macintosh.

## LAUNCHING THE SOFTWARE

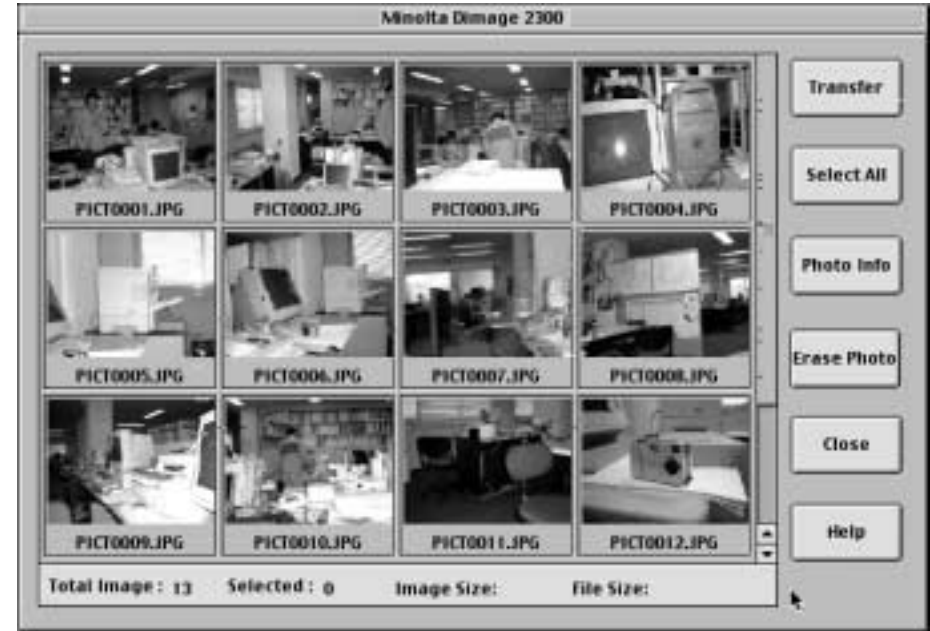
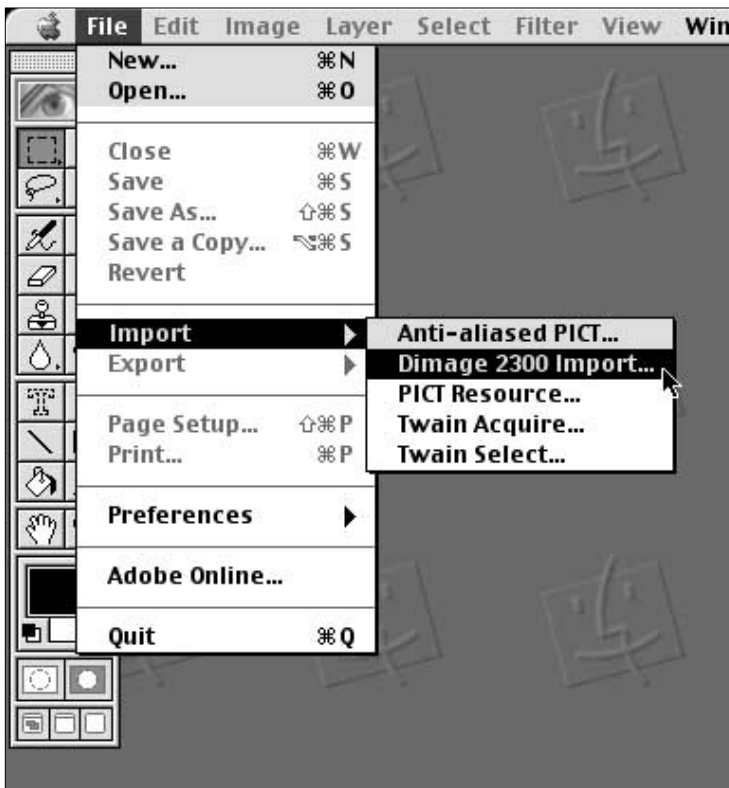
Following explanation is on the assumption that the Dimâge 2300 has already been connected to the Macintosh (see pages 13 to 14).

This example uses Adobe Photoshop 5.0 LE as a Plig-in module host application. The procedure will vary for other applications. See the operating manual for your application.

**1 Launch Adobe Photoshop 5.0 LE.**

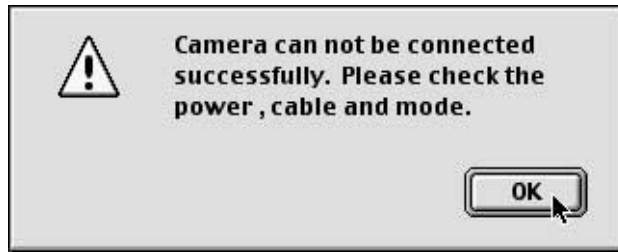
**2 Select File → Import → Dimage 2300 Import... .**

- Dimage 2300 main window shown at the right will be opened on the Adobe Photoshop window.



If there are a few TIFF files (image files that would be taken with SUPER FINE image quality) or too many image files in the CF card, it will take much time until launching the utility software. For example, 300 image files that would be taken with ECONOMY image quality are saved in the CF card, it will take approx. 5 minutes until launching the utility software.

When the computer is unable to detect a connection to the Dimâge 2300, the following error message opens.



In such a case, perform the following troubleshooting operations:

- 1) Click on 'OK' to close the error message window.
- 2) Check the following:
  - Did you turn on the Dimâge 2300?
  - Is the USB cable connected properly?
  - Has the USB cable separated from a connector?
  - Has the USB cable been cut or damaged?
  - Did you set the Function dial of the Dimâge 2300 to PC?
  - Did you insert the CF (Compact flash) card in the camera?
- 3) After verifying that all of the above have been performed properly, try to connect to the Dimâge 2300 again, following the instructions on pages 13 to 14.

There is a possibility that the first frame of the thumbnails may not be displayed in the Minolta Dimage 2300 main window as follows.



If this problem happens, please follow the procedure bellow.

- 1) Click on 'Close' to close the main window.
- 2) Select File → Import → Dimage 2300 Import... again.

# USING THE SOFTWARE

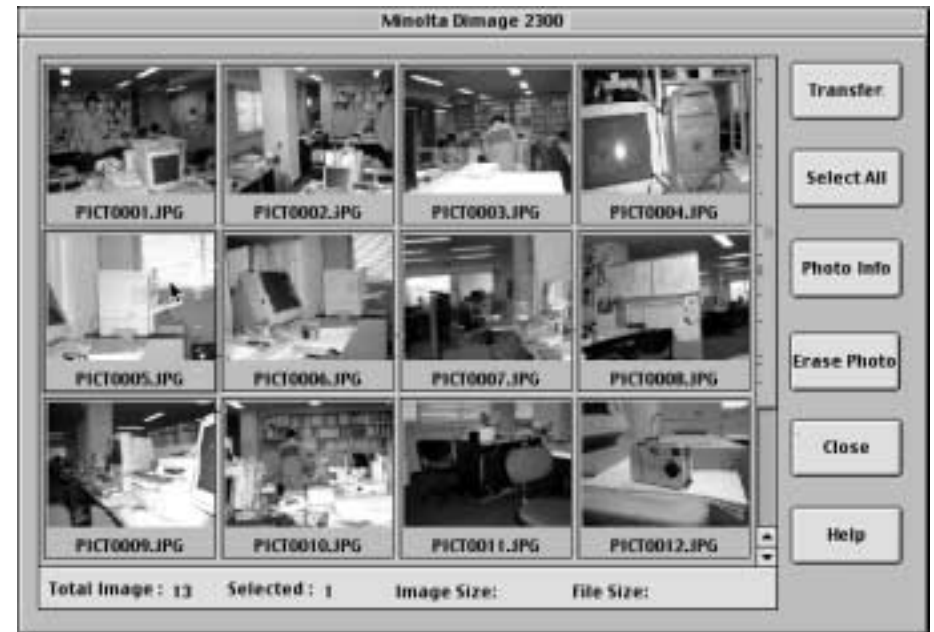
## USING THE SOFTWARE

### ACQUIRING IMAGES INTO THE APPLICATION

Acquire some or all of images into the image processing application.

#### 1 Click on the images to be copied or acquired.

- A border around the image will indicate selected image(s).
- To select two or more images, press and hold *shift* key and click on the images to be copied or acquired.
- To select all the images, click on 'Select All' in the display.

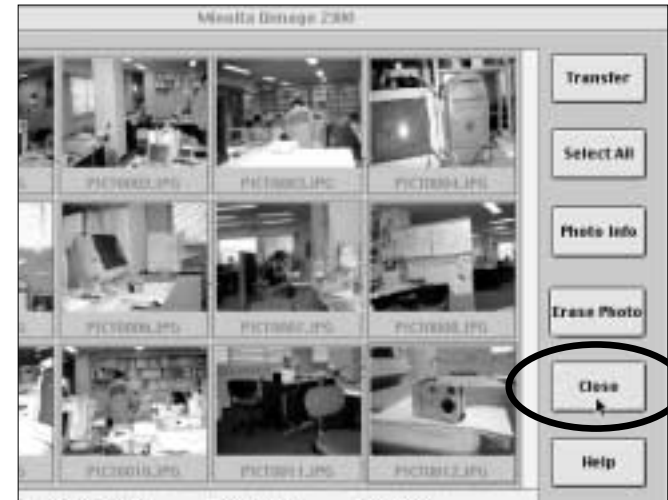


**2** Click on 'Transfer'.

- The acquire function will start. When the image is being acquired, a progress bar will show the progress of completion.
- When complete, images are acquired into the Plug-in module host application (in this case, Adobe Photoshop 5.0 LE), and will be displayed on the monitor.



**3** Click on 'Close' to close the Dimage 2300 main window.



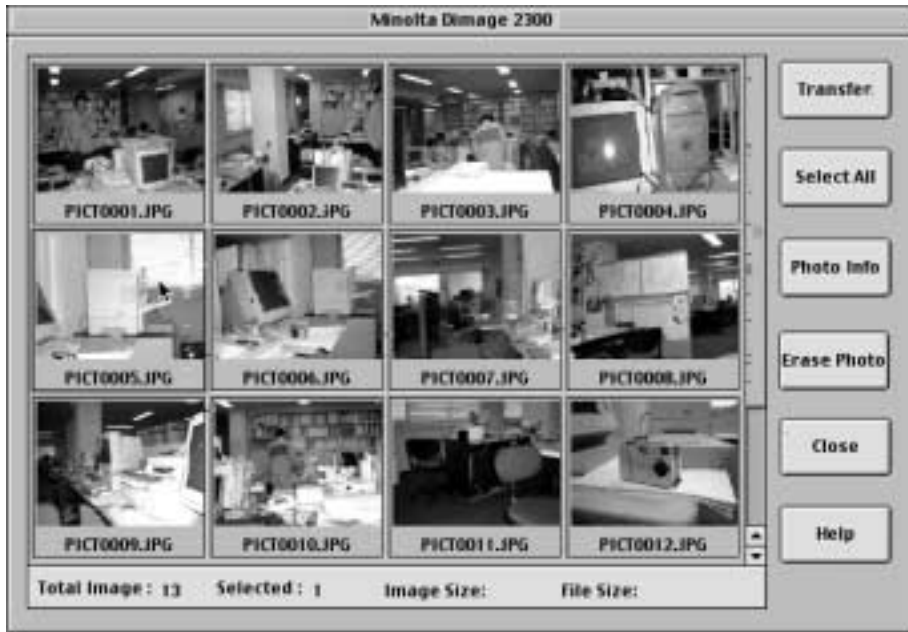
- Further operations on the image are passed on to the Plug-in module host application (in this case, Adobe Photoshop 5.0 LE). Refer to the application's manual for details.

**DELETING IMAGE FROM THE CF CARD**

Some or all of the images can be deleted from the compact flash (CF) card.

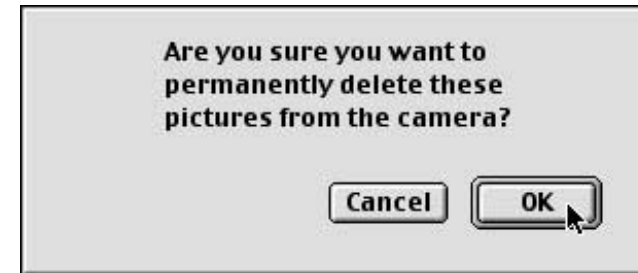
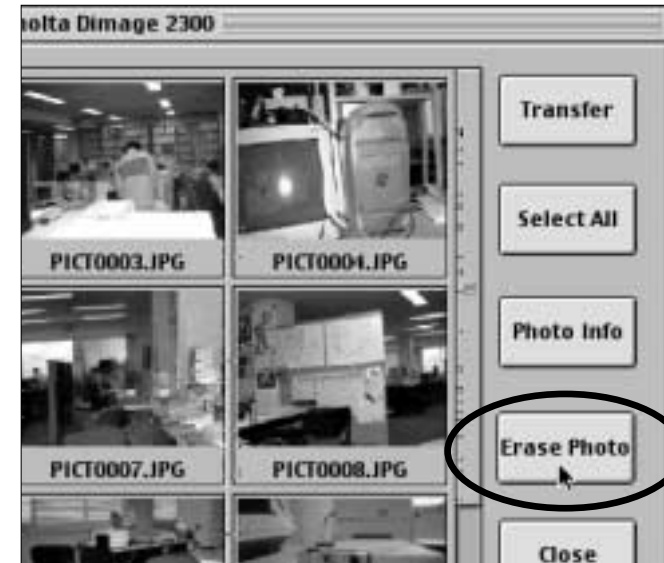
**1 Click on the images to be deleted.**

- A border around the image will indicate selected image(s).
- To select two or more images, press and hold *shift* key and click on the images to be deleted.
- To select (delete) all the images, click on '**Select All**' in the display.



**2 Click on 'Erase Photo'.**

- The confirmation message will appear.



**3 Click on 'OK' to delete images. Click on 'Cancel' to cancel the operation.**

**VIEWING IMAGE FILE PROPERTIES**

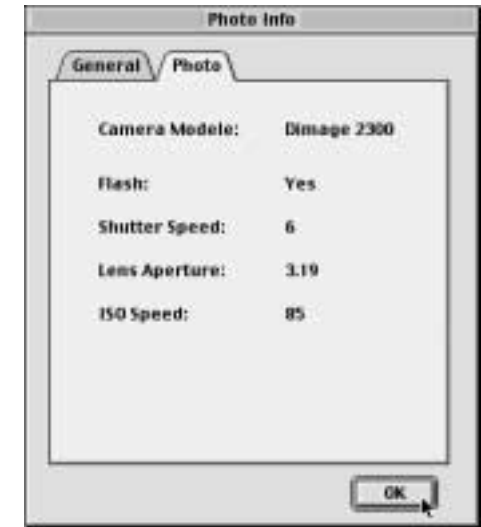
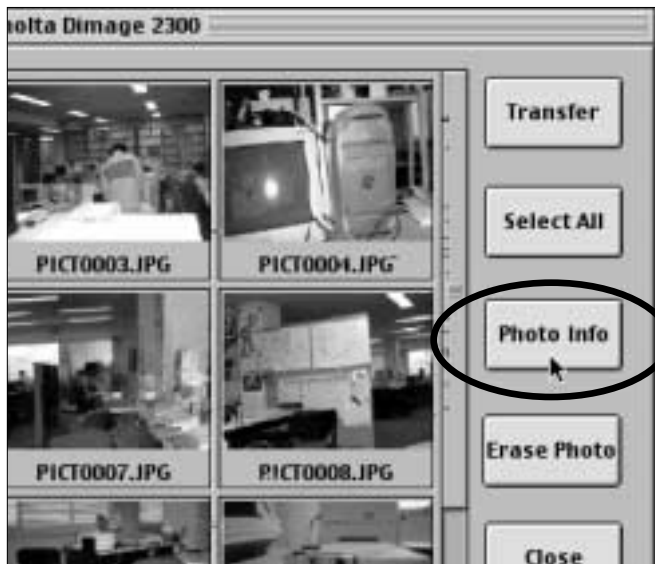
Use the following procedure to view image file properties such as capture date, image size.

**1 Click on the image you wish to view the properties.**

- The selected image will be highlighted.

**2 Click on 'Photo Info'.**

- The properties of selected image file will be displayed.

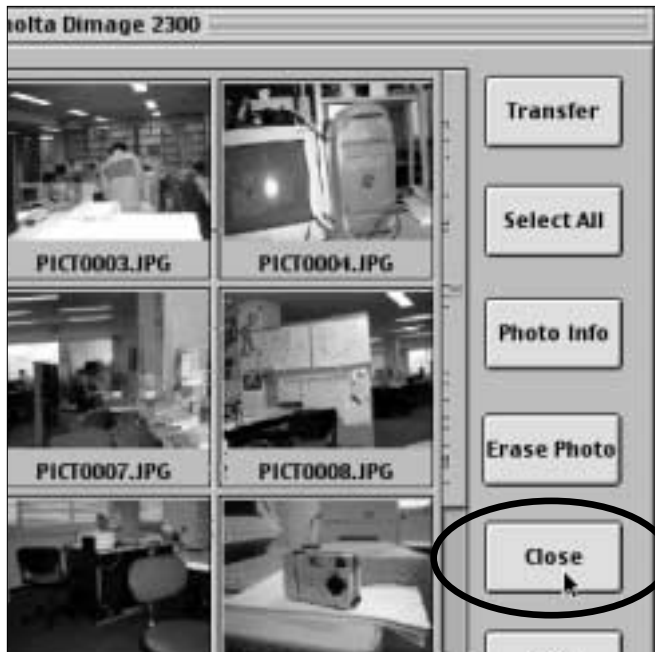


- Click on 'General' tab to show an Image Name, Capture Date, Image Size.
- Click on 'Photo' tab to show an Camera Models, Flash Use/Not Use, Shutter Speed, Lens Aperture, ISO Speed.

## QUITTING THE PLUG-IN MODULE

### 1 Click on 'Close' in the Dimage 2300 main window.

- The Plug-in module will quit and the display will return to the Plug-in host application (in this case, Adobe Photoshop 5.0 LE).



# MINOLTA

## *Dimâge 2300*

### **E** Software Instruction Manual

<b>Minolta Co., Ltd.</b>	<b>3-13, 2-Chome, Azuchi-Machi, Chuo-Ku, Osaka 541-8556, Japan</b>
<b>Minolta Corporation</b>	
<b>Head Office</b>	101 Williams Drive, Ramsey, New Jersey 07446, U.S.A.
<b>Los Angeles Branch</b>	11150 Hope Street Cypress, CA 90630, U.S.A.
<b>Minolta Canada Inc.</b>	
<b>Head Office</b>	369 Britannia Road East, Mississauga, Ontario L4Z 2H5, Canada
<b>Minolta Europe</b>	Kurt-Fischer-Strasse 50, D-22923 Ahrensburg, Germany
<b>Minolta France S.A.</b>	365 Route de Saint-Germain, F-78420 Carrières-Sur-Seine, France
<b>Minolta (UK) Limited</b>	7 Tanners Drive, Blakelands, Milton Keynes, MK14 5BU, England
<b>Minolta Austria Ges. m.b.H.</b>	Amalienstrasse 59-61, A-1131 Wien, Austria
<b>Minolta Camera Benelux B.V.</b>	Zonnebaan 39, P.O. Box 6000, NL-3600 HA Maarssen, The Netherlands
<b>Belgium Branch</b>	Prins Boudewijnlaan 1, B-2550 Kontich, Belgium
<b>Minolta (Schweiz) AG</b>	Riedstrasse 6, CH-8953 Dietikon, Switzerland
<b>Minolta Svenska AB</b>	Albygatan 114, S-171 54 Solna, Sweden
<b>Finland Branch</b>	Niittykatu 6 PL 37, SF-02201 Espoo, Finland
<b>Minolta Portugal Limitada</b>	Av. do Brasil 33-A, P-1700 Lisboa, Portugal
<b>Minolta Hong Kong Limited</b>	Room 208, 2/F, Eastern Center, 1065 King's Road, Quarry Bay, Hong Kong
<b>Minolta Singapore (Pte) Ltd.</b>	10, Teban Gardens Crescent, Singapore 608923

© 2000 Minolta Co., Ltd. under the Berne  
Convention and Universal Copyright Convention

*For Macintosh*

*For USB Connection*